

dekō[®]

premier markerboards™

lighter. brighter. flexible.™

installation guide



lighter. brighter. flexible.™

844.366.1545 | www.dekomarkerboards.com

storing.

dekō® markerboards must be stored indoors, stacked vertically over a full substrate, or horizontally, to avoid bowing.

The face of each dekō® markerboard is protected by high-quality removable film. The protective film should be left in position until the installation is complete to keep the markerboard writing surface in factory condition.

Do not store deko® markerboards outdoors in direct sunlight or extreme heat. Direct UV exposure can damage the protective film covering the markerboards.

handling.

While handling dekō® markerboards, always wear gloves and carry vertically.

To prevent damage - DO NOT USE harsh chemicals, abrasive cleaners, sharp writing utensils, or other sharp objects on your dekō® markerboard.

cleaning.

When installation is complete remove the protective film, and clean the markerboard with denatured alcohol before first use.

Dry Erase Marker

A soft dry eraser or soft microfiber cloth is recommended.

Wet Erase Marker

A soft microfiber cloth used with warm water or markerboard spray cleaner is recommended.

Permanent Markers

Use a soft microfiber cloth with markerboard spray cleaner or denatured alcohol to remove tough inks and permanent marker. Follow this cleaning with a light water rinse to remove cleaning residue.

GENERAL CARE

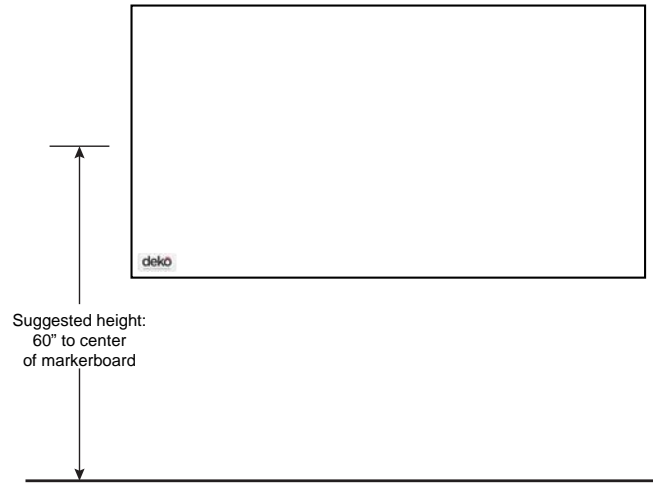
To refresh your dekō® writing surface to its original brilliance, simply spray the entire surface with water, markerboard cleaner or denatured alcohol, and wipe dry with a soft microfiber cloth.

fit.™ setting installation



The suggested mounting height is to place the vertical center of the markerboard at 60" above the floor.

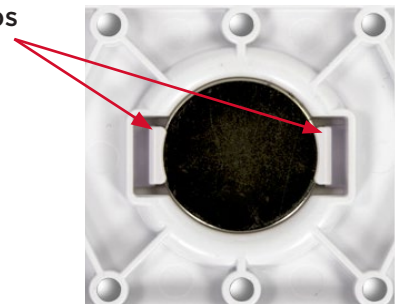
1. The installed surface must be free of dust.
2. Mark a level line 4" down from desired top height of markerboard.
3. Place the bottom of the fit.Clip™ supplied with the markerboard on the line and mount to the wall with supplied screws or toggle bolts (within 8" from sides) as needed. If mounting the markerboard tight to the ceiling, allow 1/2" additional top clearance for hanging on the wall clip.
4. Insert magnets into the recesses of fit.Pucks™ making sure retention tabs click into place (see photos).
5. Using the provided self-tapping screws, attach Pucks to the wall (as shown in photo) into studs between spacer rows. For installations where a stud does not line up at the recommended locations, toggle bolts are provided to secure Pucks to the wall.
6. The markerboard is ready to install once all pucks are secured to the wall. Slightly angle markerboard away from the wall at the bottom while aligning the receiver on the back of the markerboard to the wall Clip. Once the receiver is engaged with the wall Clip, gently place markerboard to the wall from top to bottom while keeping your fingers clear.



fit.Pucks™

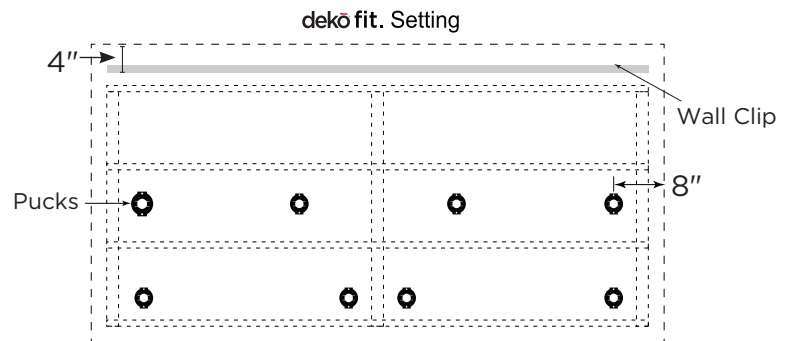


retention tabs

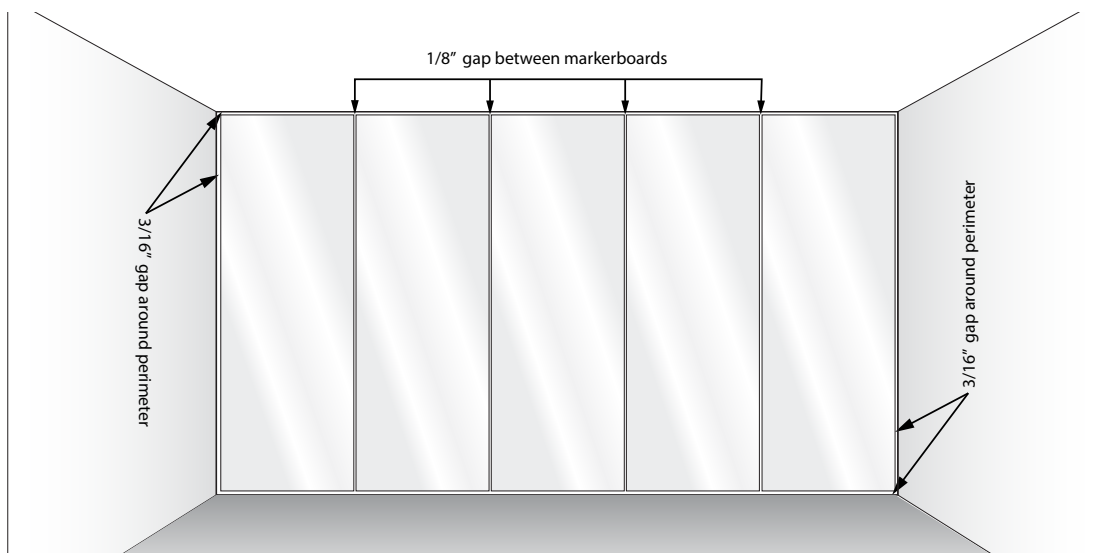


When you hear the magnets make contact, your markerboard is calibrated to the wall and you're ready to remove the outer protective film.

Clean dekō® markerboards with denatured alcohol before first use.



Typical Puck layout on wall



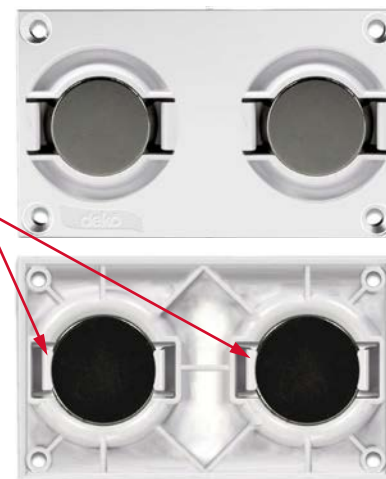
Typical Full Wall Installation

For continuous fit.Clip™ wall installations, powder coated wall Clips are provided to span across the seams of adjoining markerboards. This will assist with the alignment of the top and bottom edges of the markerboards.

Also included for these applications, with adjoining seams, are Seam Calibrators. They will help to align seams of adjacent markerboards to be on a flush surface plane.

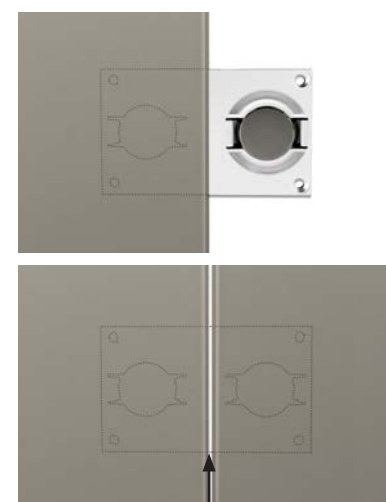
1. To install Seam Calibrators, insert magnets into the recesses making sure retention tabs click into place (see photos).
2. Place Seam Calibrators on the backside of one installed markerboard as shown.
3. Screws are provided if you choose to use them, but are not needed in most cases. Consult your supplier to address questions for your application.
4. Next, mount the adjacent markerboard onto the wall. If installing more than two markerboards along one continuous wall, follow the same steps in succession until your markerboards are fully installed. Be sure to leave expansion gaps of 1/8" for internal seams and 3/16" at inside corners as shown above.

retention tabs



After installation is complete, remove the outer protective film.

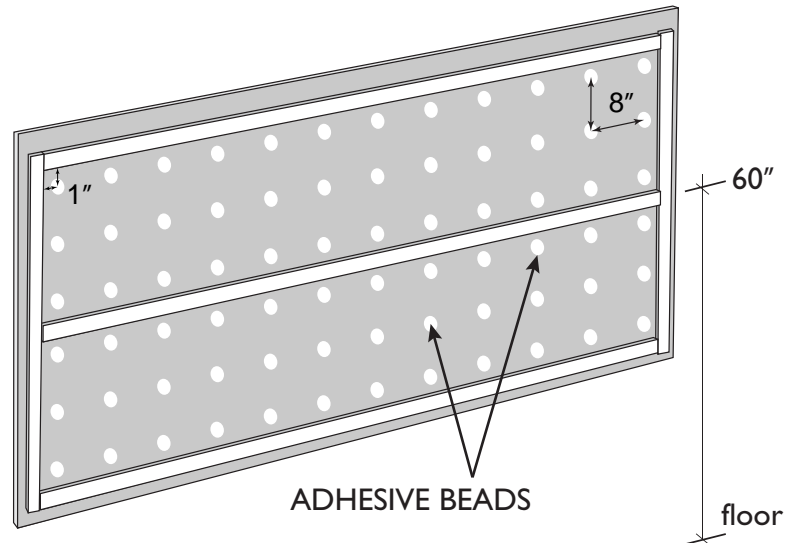
Clean dekō® markerboards with denatured alcohol before first use.



Seam Calibrator

The suggested mounting height is to place the vertical center of the markerboard at 60" above the floor.

1. The wall surface should be primed, dry, and free of dust.
2. Layout markerboard positions using a laser level, or use a pencil or tape to establish level and plumb marks.
3. Clean the backside of the markerboard with a rag and denatured alcohol to remove any dust or residue.
4. Apply a Quarter-sized bead of adhesive (neutral cure silicone, supplied with your install kit) every 8 inches on center, between the rows of tape and 1" from edges of tape as shown in the diagram.



5. Remove tape backer. The tape will hold the markerboard in position on the wall while the adhesive cures.
6. Install the dekō® markerboard aligned with your level and plumb marks.

NOTE: Once the mounting tape has contacted the wall surface further position adjustment may not be possible.

7. Press markerboard to the wall to engage tape using supplied brush/squeegee.

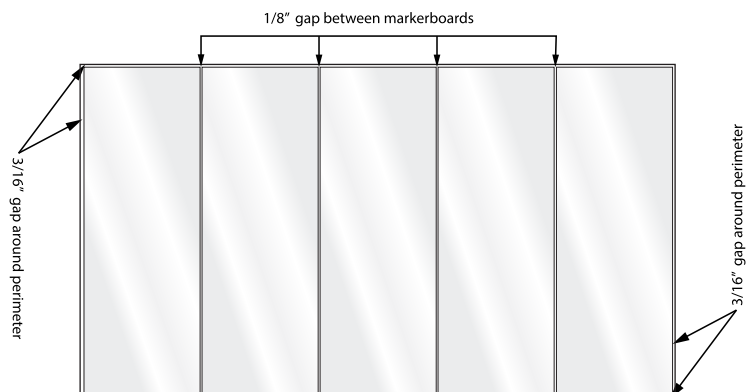


For continuous wall installations allow 1/8" expansion gaps between adjoining markerboards and 3/16" gaps at inside corners. Make sure no adhesive is applied in seams.

We recommend painting behind each seam with a color close to the markerboards being installed.

After installation is complete, remove the outer protective film.

Clean dekō® markerboards with denatured alcohol before first use.





844.366.1545 | www.dekomarkerboards.com

©2024 deko, LLC. All rights reserved.